



Braintree Sixth Form

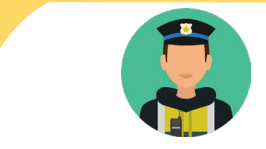
Criminology Learning Journey KS5



AC 1.2 Assess the usefulness of investigative techniques in criminal investigations



YEAR 13



AC 1.1 Evaluate the effectiveness of personnel in criminal investigations



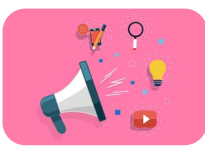
EXAM



AC 2.1 Compare campaigns for change

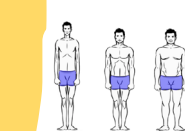


AC 3.1 Plan a campaign for change

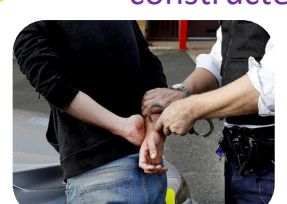


AC 3.3 Justify a campaign for change

AC 1.1 Compare criminal and deviant behaviour



AC 1.2 Explain how criminality is socially constructed



welcome



AC 1.5 Explain the impact of media on public perception of crime



AC 1.4 Representation of crime in the media

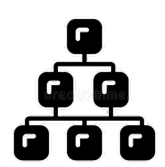


AC 1.2 Reasons why crimes go unreported



Unit 1- Changing Awareness of Crime

AC 1.3 The consequences of unreported crime



AC 1.1 Different types of crime

YEAR 12

Unit 2- Criminological Theories

AC 4.2 Explain how social change affects policy development

AC 3.2 Evaluate criminological theories



AC 2.2 Describe Individualistic theories of criminality

AC 2.3 Describe Sociological theories of criminality



AC 2.1 Describe Biological theories of criminality

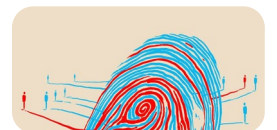
Unit 3- Crime Scene to Courtroom

AC 1.4 Examine the rights of individuals in criminal investigations

AC 2.2 Describe the trial process

AC 2.5 Discuss the use of laypeople.

AC 3.1 Examine information for validity



AC 2.4 Assess influences in criminal case outcomes



AC 1.2 Describe the organisation of the CJS

AC 1.1 Describe the process of law making



AC 3.2 Draw conclusions

CONTROLLED ASSESSMENT

AC 2.3 Understand rules in relation to evidence

AC 2.1 Explain the requirements of the CPS for prosecution



AC 1.3 Explain how evidence is processed

Unit 4- Crime and Punishment

AC 3.3 Examine the limitations of agencies of social control

AC 3.1 Explain the role of agencies of social control

AC 2.3 Discuss forms of punishment



AC 2.2 Discuss the aims of punishment



AC 2.1 Explain Social Control

AC 1.3 Describe models of criminal justice

AC 3.2 Describe the contribution of agencies in achieving social control



EXAM